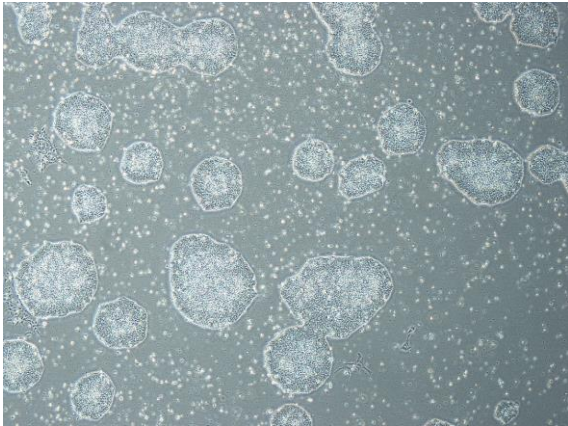
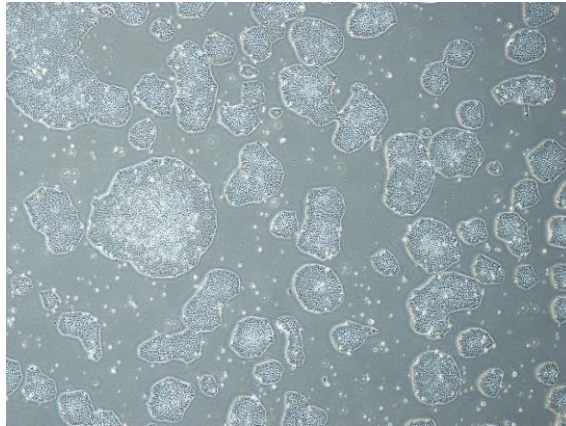


【 CiRA-j-1363 】 Morphology of iPSC colonies

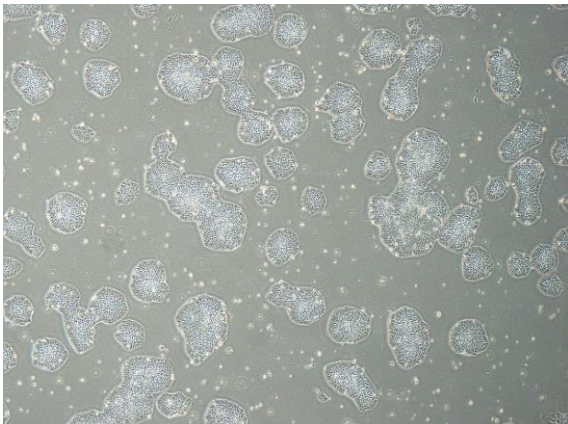
CiRA-j-1363-A: passage-3



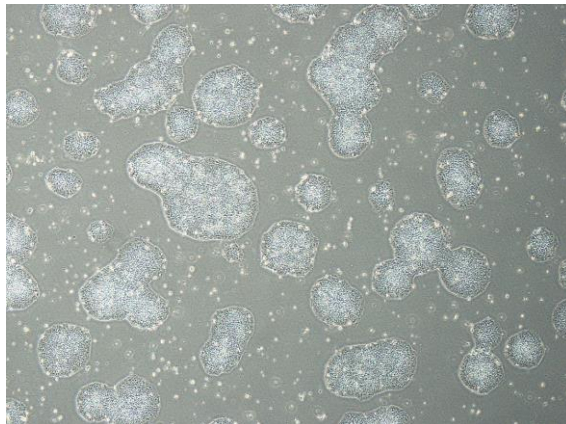
CiRA-j-1363-B: passage-3



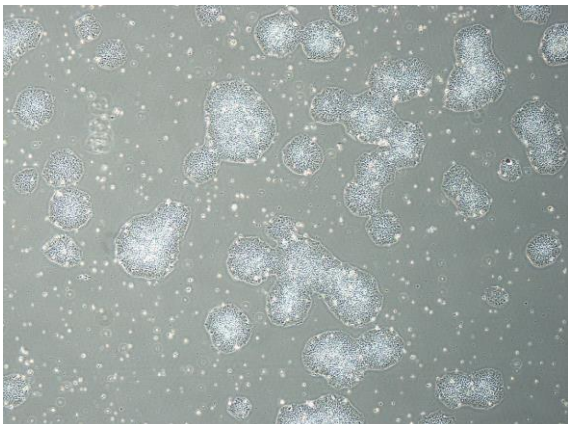
CiRA-j-1363-C: passage-3



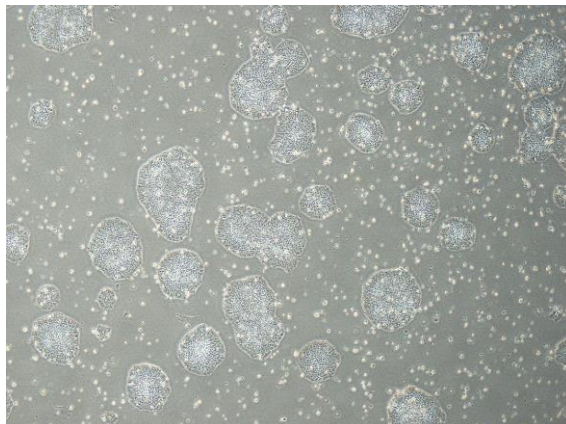
CiRA-j-1363-D: passage-3



CiRA-j-1363-E: passage-3



CiRA-j-1363-F: passage-3



(All images were captured at 4x magnification)